

Technical Datasheet

MOBILE DATALOGGER POLWAX MR800 / MR1600 / MR3200



MOBILE DATALOGGER

Because power expenses account for roughly 70–80 percent of a compressed air system's overall cost, when we talk about operational costs in compressed air systems, we are actually talking about energy costs. Does your compressed air system fall under this as well? What are your actual costs per m3 of air produced? What kind of energy does waste heat recovery produce? What is your plant's overall performance balance? How high are the pressure dew points, the differential pressures of single filters, and the amount of compressed air used?



Features

- **TFT Touch Screen Display**
- **User Friendly Menu**
- **Easy to Carry**
- **Light Weight**
- **Cloud Dashboard for Data Monitoring**
- **USB Connection**
- **Ethernet & MODBUS RTU Communication**
- **Relay & RS 485 Output**
- **Wifi & GSM Communication**
- **Printer Port**



Suitable for any third party Sensors / Transmitters

Sensors for Mobile Datalogger

POLWAX MR800 / MR1600 / MR3200

Compressed air and gas flow meters

Installation and removal through a normal 1/2" ball valve when under pressure. A safety ring prevents uncontrollable ejection in the event of installation or removal while under pressure. nitrogen, argon, CO2, compressed air, and oxygen.

Dew Point Sensors

- extremely durable; very stable Large measurement range (-80° to +20 °Ctd), short adaptation time For every dryer: (Adsorption dryers, membrane dryers, and refrigeration dryers)
- Fast coupling standard measuring chamber for simple installation under pressure

Pressure Sensors

- a wide choice of pressure sensors with various measuring ranges for each measurement purpose
- Easy connection installation under pressure
- Temperature sensors a lot of temperature options sensors, for example, in measurement or of the outside temperature temperature of a gas
- Pt100 (2-wire or 3-wire)
- Pt1000 (2-wire or 3-wire)
- Sensors for temperature that (4-20 mA) measurement transducer output)

Temperature Sensors

Humidity Sensors

Flow Sensors

Technical Details

Channels	8 / 12 / 16 / 24/ 32 / 48
Inputs	Universal / RTD pt100 / Thermocouple / 4-20mA / 0-10V / Customize
Display	4.3" / 5.6" / 7" / 8" Color Touch Screen
Ethernet Communications	Webserver / FTP / email / Modbus TCP
Password Protection	Access to conguration is allowed only after the user has entered a password
Language	English
Display Color	TFT
Filename	Name tag, prexed with date/time
Thermocouple Types	B, E, J, K, L, N, R, S, T
Resistance Thermometer	Pt100
Digital Filter	Programmable 0 to 60s
Type	Portable
Display Type	Color
Communications	USB / Ethernet / RS485 Modbus / Wi-Fi / GSM
Power Supply	230 VAC
Operating Temperature	-10 to 50 °C
Storage Temperature	-40 to +70 °C
Data Monitoring Software	POLWAX_View10.4 (Suitable for Win10 / Win10Pro)
Report Format	.PDF / .csv / .xlsx
Cloud Dashboard	Webbase*

* Suitable for any third party Sensors / Transmitters

Mobile Data logger

Unlimited Applications

POLWAX is a Italian manufacturer and supplier of industrial automation equipment. The company has been in the market for nearly 8 years and offers services provided by a team of young and qualified professionals, both designers and programmers, as well as sales representatives.

We specialise in the production of devices data recorders. In the offer you will find two families of high quality products for data recording:

CLIMA series for climate monitoring

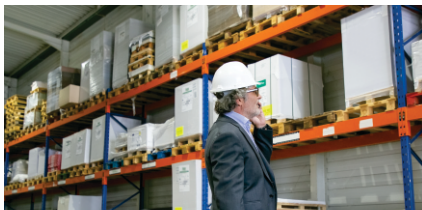
Motas series for industrial applications

What's new is the portable case for these products, which allows transporting them from place to place. This is a significant advantage, because stationary recorders gain features of portable recorders and at the same time retain the capabilities for advanced measurement and recording of the tested media.

Applications :

- Recording the operating parameters in water and sewage pumping stations
- Recording the operating parameters in heat chambers and heat exchange units
- Pressure control of hydrophore stations
- Recording changes in river levels

Mobile Datalogger



Warehouse



Mining



Hydrophore station



Cement Industry



Pump station



Defense



Pharma Industry



Heat exchange unit

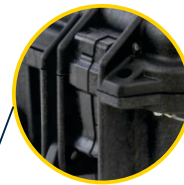


Chemical Industry

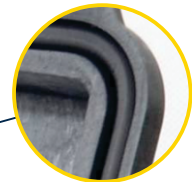
Portable Case - the Advantages

Protection of electronic equipment and valuable recorded data is a growing concern. This is particularly important in non-stationary solutions, when measuring instruments are mounted in portable, sealed transport cases, which are the only barrier against the harsh environmental conditions. Therefore, this case must meet a number of requirements guaranteeing the safety of the devices installed in it, and hence the reliability of this type of data recorders. In the sets offered by our company we use which is a proven and reliable solution in the transport and storage of sensitive measuring instruments for professionals.

The double-step latches are smart and make the case easier to open.



Heavy duty „fins“ are engineered to protect latch and hinge areas.



The neoprene **o-ring** keeps the case watertight.



Extra thick **5.3 mm wall construction** provides significantly greater strength to weight ratio over conventional injection moulding.

Technological holes allow for lock or seal set up to increase safety in the event of data theft attempts.



Big-fold down and rubberized **handles** are strong, comfortable and ergonomic



Automatic pressure equalization valve releases air from the interior while keeping water molecules out, ensuring IP 65 protection class.



The On/Off switch on the POLWAX MR800 / MR1600 / MR3200 panel enables you:

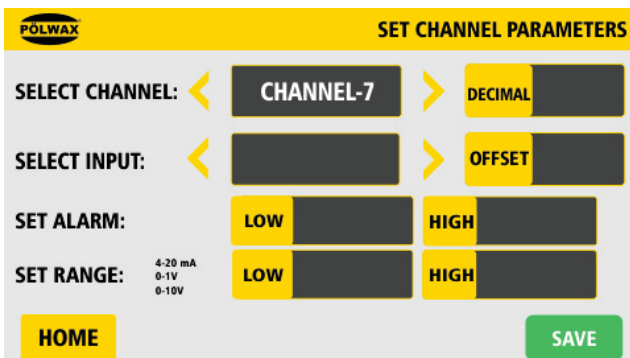
- To view the remaining battery capacity and the charging status, short press the button.
- To power on or off the device, long press the button for 2 seconds. After the POLWAX MR800 / MR1600 / MR3200 is powered on, it starts the initialization process. During this period, POLWAX MR800 / MR1600 / MR3200 detects the connected sensors and establishes the connections to sensors.



The quick buttons or icon on the bottom are described as follows:

- Graphic: To switch to the graphic view.
- Value: To switch to the value view.
- Menu: To enter the operation menus for detailed settings.
- Up and Down arrows: To scroll up and down pages to view measured data.

The Menu button enables you to view and configure settings of the POLWAX MR800 / MR1600 / MR3200 and the connected sensors

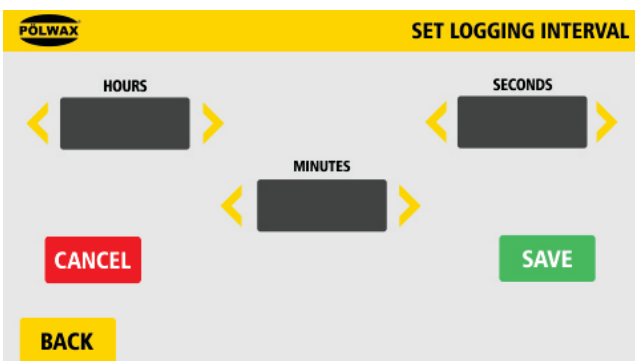


Channel No. :

Use (<) & (>) buttons to change the channel numbers. Use save button to save the settings for each channel.

Range High/LOW set point value :

Each channel can be programmed for different High/Low set point values individually. Press "High". The display will show New Screen; Enter the Value, and Press "Low". The display will show New Screen; Enter the Value, Particular Sensor Type Set Point Value Already Added.



Set LOG Time :

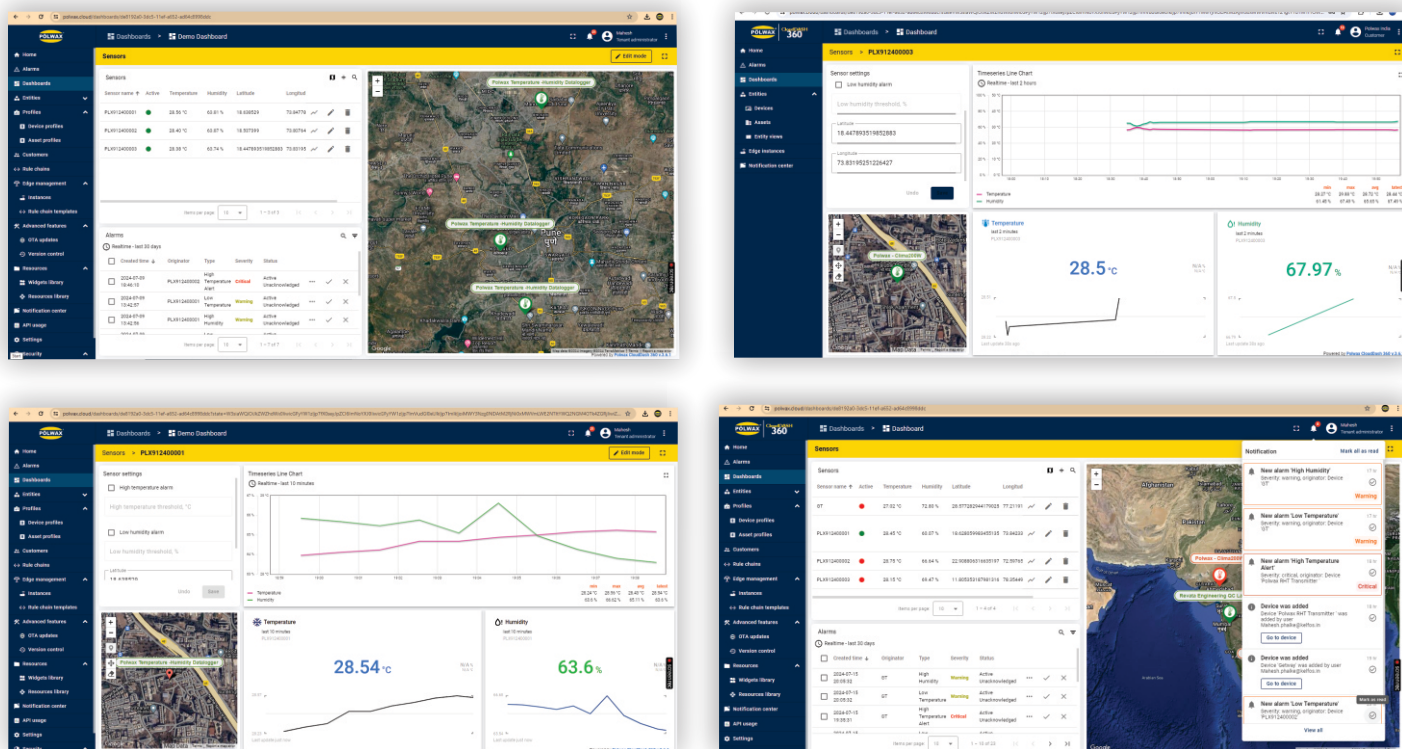
The menu is used to set the duration of two successive readouts to be stored in memory/printouts. Press the log Time .The display will show New Screen" Log TIME SETTING ""Set the Time. Use + & - buttons to set the desired digitvalue(Hour/Min/Sec).Then Press OK Time Will SET. Press Cancel for Previous Screen. Range is 1sec -59 sec, 1Min-59 Min, 1hrs - 23hrs.

NOTE: - Printer port is provided at the back side of the logger. Only parallel port dot matrix printer can be connected. Printing of stored data is possible through software.

Cloud Information Polwax MOBILE data loggers

Cloud

The base units equipped with Ethernet, Wi-Fi and GSM/4G connectivity can automatically send, at regular intervals, the data to an HTTP server, and in particular to the Polwax portal “www.polwax.cloud”. This allows you to view the data from anywhere in the world, even by using mobile devices (tablet, smart phone, notebook), simply having an Internet connection and using a web browser. The data sending interval is configurable.



Configuration

The data logger equipped with LCD and keyboard can be also configured via the front keyboard. The access to the configuration parameters of the data logger via keyboard is password protected. There is one password for the use of the data logger as operator (access to some settings only) & (access to all the configuration parameters). The changes done to a data logger configuration via keyboard are automatically transmitted to the base unit and also reported in the cloud dashboard, allowing an always updated viewing of the system from the PC connected to the base unit. The base unit keeps also track of the system parameters of each data logger (for example of the alarm thresholds, etc.); it is therefore not necessary to request the parameters to the various data loggers to know the system configuration, just connect the PC to the base unit to immediately get all the information needed.

Internal clock

The internal clock of each data logger is continuously synchronized with the clock of the base unit, thereby eliminating any problems due to the drift of the data logger clock. This ensures that the data loggers of the system have all the same time, feature particularly useful if you want to compare the measures acquired by various data loggers at the same time. If the base unit can connect to the Internet (via Wi-Fi, Ethernet, cellular network), the clock can be regularly synchronized automatically with a reference server.



Router



Data Logger



Cloud Server



Cloud Dashboard

Polwax Cloud Your Data, Anytime, Anywhere

Polwax Cloud harnesses the power of IoT to automate data logging and alert notifications, enabling you to monitor and manage multiple data logging devices in different locations completely remotely. The system easily scales to meet your needs. Perfect for compact systems with just a few measuring points, or corporate solutions with thousands of devices around the globe.

You will need to create an account at www.polwax.cloud before setting up your cloud-connected data logger.



The **Polwax MOTUS Series** has been designed to monitor air temperature and relative humidity & other industrial parameters in a large range of applications. Its external temperature and humidity probe made it an ideal choice for applications where it may be problematic to locate the whole device such as museum display cases and HVAC systems.

Products in the **Polwax MOTUS Series** range are simple to set-up and easy to use. Download the Polwax Cloud App and set-up a device in minutes over your WiFi network. After set-up, the device can be placed anywhere within range of the WiFi network, continually monitoring and recording your data to the EasyLog Cloud. the ambient temperature and humidity of your chosen location from anywhere at any time.

Features at a glance*



Store your data logging records securely on the Cloud



Connect multiple users with variable account privileges



Connect data loggers from multiple sites in a single account



Easily access your most important data, anywhere



Remotely manage all of your data logging devices



Never miss a critical event with flexible advanced notifications



Review and analyse your data with powerful graphing functionality



Keep track of data events and system activity with a detailed event log

*Features depend on account type.



POLWAX Group has got an experienced, highly-qualified project team conducting extensive R&D operations. Owing to that, goods holding the POLWAX brand feature customer-tailored flexibility and meet requirements of various industries.

Polwax International Co.

Contrada De Angelis 953,
Piano 1, Giordano laziale, KR 11432 Italy
export@polwax.it
www.polwax.it

Poland

Apt. 324 al. Modzelewski 9940,
Sedziszów Małopolski, ZP 44-153
www.global.polwax.it

Philippines

40769 Wisoky Route Suite 979
www.global.polwax.it

Vietnam

Subida Marilu, 86,
Cornellá de Llobregat, Ext 27926
www.global.polwax.it

Norway

Subida Marilu, 86,
Cornellá de Llobregat, Ext 27926
www.global.polwax.it

India

A12/45, sector - 2 Bharti Vidyapeeth Marg,
CBD Belapur, Navi Mumbai - 400615
Maharashtra, India
www.polwax.in



IMPORTANT NOTICE AND DISCLAIMER

POLWAX PROVIDES TECHNICAL AND RELIABILITY DATA (INCLUDING DATA SHEETS), DESIGN RESOURCES (INCLUDING REFERENCE DESIGNS), APPLICATION OR OTHER DESIGN ADVICE, WEB TOOLS, SAFETY INFORMATION, AND OTHER RESOURCES "AS IS" AND WITH ALL FAULTS, AND DISCLAIMS ALL WARRANTIES, EXPRESS AND IMPLIED, INCLUDING WITHOUT LIMITATION ANY IMPLIED WARRANTIES OF MERCHANTABILITY, FITNESS FOR A PARTICULAR PURPOSE OR NON-INFRINGEMENT OF THIRD-PARTY INTELLECTUAL PROPERTY RIGHTS. These resources are intended for skilled developers designing with Polwax products. You are solely responsible for (1) selecting the appropriate Polwax products for your application, (2) designing, validating, and testing your application, and (3) ensuring your application meets applicable standards, and any other safety, security, regulatory or other requirements. These resources are subject to change without notice. Polwax grants you permission to use these resources only for development of an application that uses the Polwax products described in the resource. Other reproduction and display of these resources is prohibited. No licence is granted to any other Polwax intellectual property right or to any third-party intellectual property right. Polwax disclaims responsibility for, and you will fully indemnify Polwax and its representatives against, any claims, damages, costs, losses, and liabilities arising out of your use of these resources. Polwax's products are provided subject to Polwax's Terms of Sale or other applicable terms available either on polwax.it or provided in conjunction with such Polwax products. Polwax's provision of these resources does not expand or otherwise alter Polwax's applicable warranties or warranty disclaimers for Polwax products. Polwax objects to and rejects any additional or different terms you may have proposed.

IMPORTANT NOTICE : Mailing Address: Polwax International Co, Contrada De Angelis 953, Piano 1, Giordano laziale, KR 11432 Italy Copyright © 2024, Polwax International Co. Incorporated